

## How to set your Skype profile as public/contacts only



Public profile Contacts only Edit



**Thor Odinson**

Skype Name teststudentabm28

Location United States

Language English

First, next to Skype Home, click Profile.

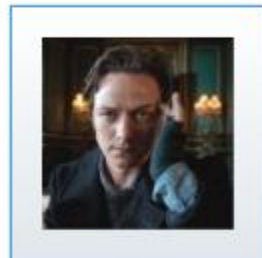
Your profile should pop up.

Public profile Contacts only Edit



Click the Edit button.

Then click on the button that says Contacts only (if you are setting yours to Contacts only, it should say Public).



**Thor Odinson**

Why hello.

[Change picture](#)

Contacts only▼

Contacts only▼

Public - visible to everyone on Skype

Contacts only - visible just to your contacts

Skype Name teststudentabm28

This text box should pop up. Click on the option in which you would like your profile to appear.

Public▼

Now your profile should be set to either public/ contacts only.